

Salvi

# Bütze Wolfurt Primary School

Project Competition 2015  
1.st Prize, Realization 2017 - 2019  
“The School as Path and Square”

Schenker



“A compact, *sustainable timber construction* with wonderful sightlines, *fluid transitions*, and inviting pathways to the surrounding green and village.”

Weber



“The *rural market town Bütze-Wolfurt* in the Bregenz district of Vorarlberg wanted to *enlarge their primary school and integrate a kindergarten and day care center.*”





The decision was made to preserve the old building from the 1960s and demolish the part from the 1990s due to structural reasons. The gymnasium on the lower floor was renovated and built over. Now a new 60-meter-long and 27-meter-high timber-frame volume with a pergola at each end complements the overall design of the complex.

Weber



Schenker



“The school is a meticulously orchestrated *spatial continuum* with intimate places of retreat and *communicative courtyard situations*. Generous skylights and glazing create exciting sight-lines, *playing with light and shadow* – as Josef Frank might say: *The school as path and square.*”





“Cozy atmosphere meets local handcraft: window frames, parquet floors, and high-quality furniture made of oak, accompanied with wood wool ceiling panels for pleasant acoustics and a healthy environment for the little ones.”



Salvi

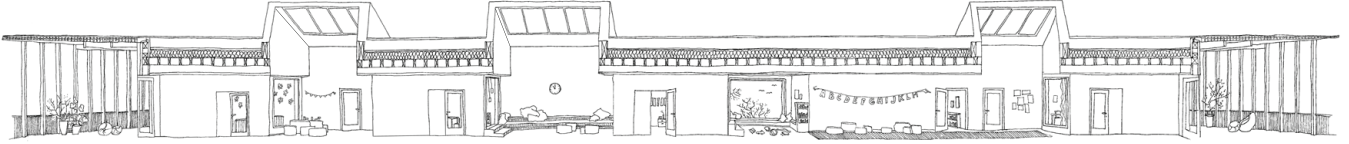


Weber

“The floor plan *interlocks vertically and horizontally* to literally put as *few walls and barriers* in their way as possible.”

Schenker

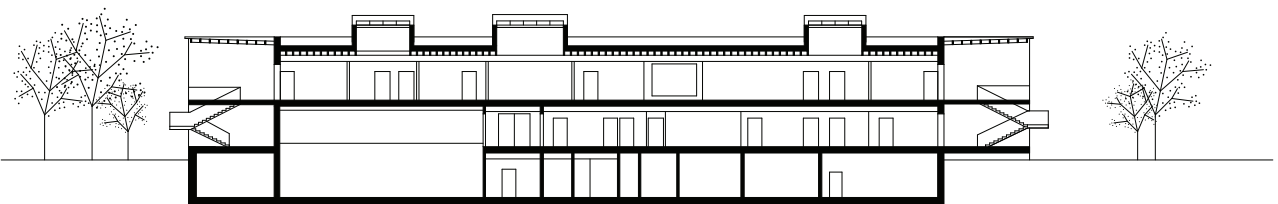




Schenker



Weber





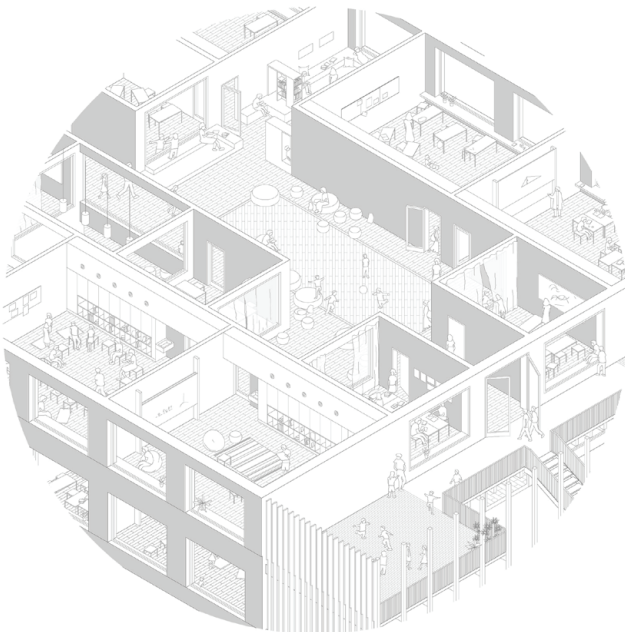
“A multitude of *free spaces* to romp around in, mobile shelves and rolling containers follow the children wherever they want, snug *cozy corners* and *built-in benches* invite one to rest in a concentrated refuge.”





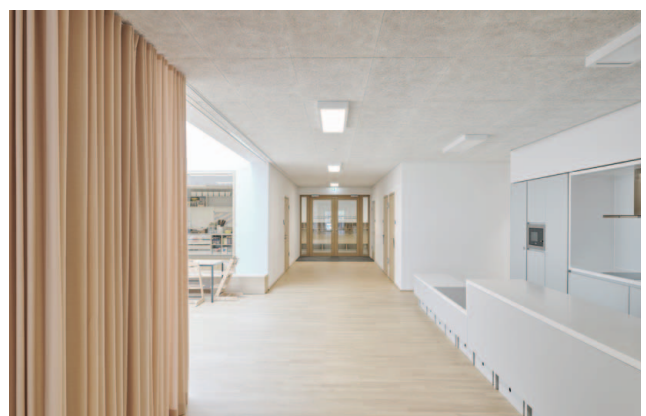
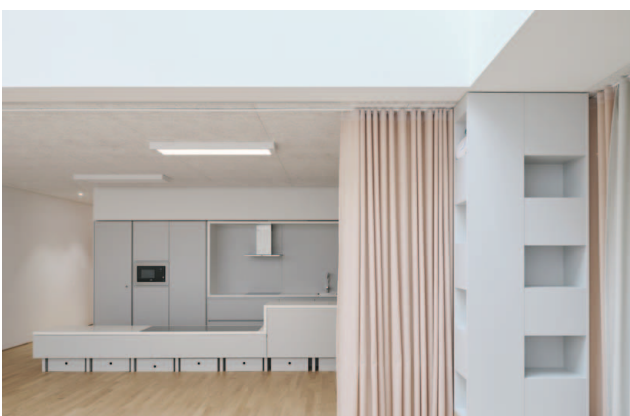


Weber



The *diverse functions* - kindergarten, primary school, gym, and event venue - are assigned to clearly defined spaces, which interact through the centrally located atriums and courtyards and encourage *community life*. Communal areas can be generated as required in the independent zones, thereby avoiding unnecessary corridors.

Schenker





“The pergolas at the ends of the new building, which also serve as emergency escape routes, function like gills to the outside and reveal the structure of the building.”





“The *calm window rhythm* of the subtle gray timber façade is oriented upon the sitting height of children and combines harmoniously with the *beauty of the countryside.*”





## PROJECT DETAILS

- Commission Type:  
EU-wide competition with prior selection procedure, Partly General-planner
- Prize:  
1st Prize
- Client:  
Municipality of Wolfurt
- Location:  
Wolfurt, AT
- Realization:  
2017 - 2019
- GFA:  
7204 m<sup>2</sup>
- Building Costs:  
9 M EUR
- Energy Efficiency:  
Passive House Standard
- Team:  
Eva Andrasova, Emina Delacic, Marlies Grammanitsch, Simon Gysel, Martin Maidl, Barbara Roller, Christian Rübenacker, Jana Sack, Michael Salvi, Pia Schmidt, Andres Schenker, Tina Tobisch, Rostislav Stoklasek, Thomas Weber

## COOPERATION

- Statics:  
Hämmerle - Huster Statik
- Fire Safety:  
IMS Brandschutz
- Building Physics:  
IBO - Österreichisches Institut für Bauen und Ökologie
- Building Services:  
GMI - Ing. Peter Messner GmbH
- Electrical Planning:  
Ingenieurbüro Hiebeler + Mathis
- Lighting Design:  
Designbüro Christian Ploderer
- Landscape Architecture:  
DnD Landschaftsplanung
- Model Construction:  
Modellbauwerkstatt Gerhard Stocker
- Photography:  
David Schreyer