

Salvi

Ebnet School Complex Embrach

Project Competition 2012

2nd Prize

“At the Scale of the Topography”

Schenker



“The new buildings enter into a spatial dialogue with the site informed by the hilly topography.”

Weber

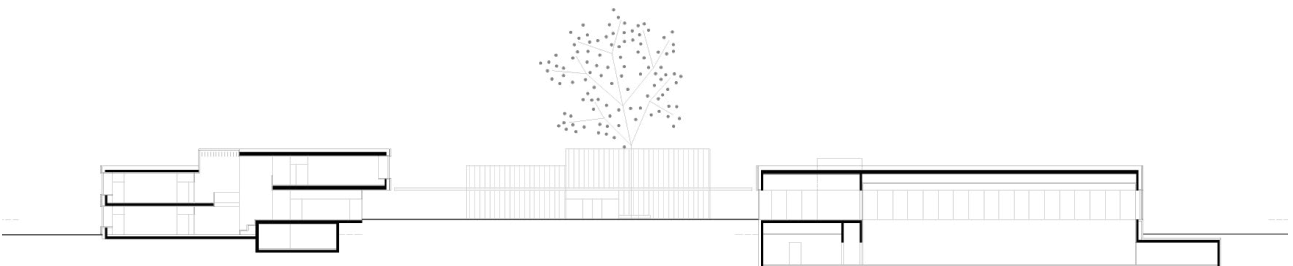
Salvi

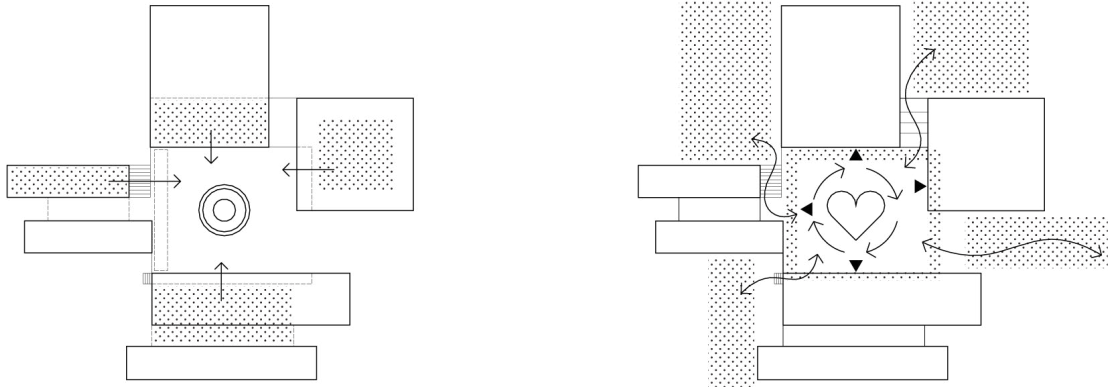


Weber

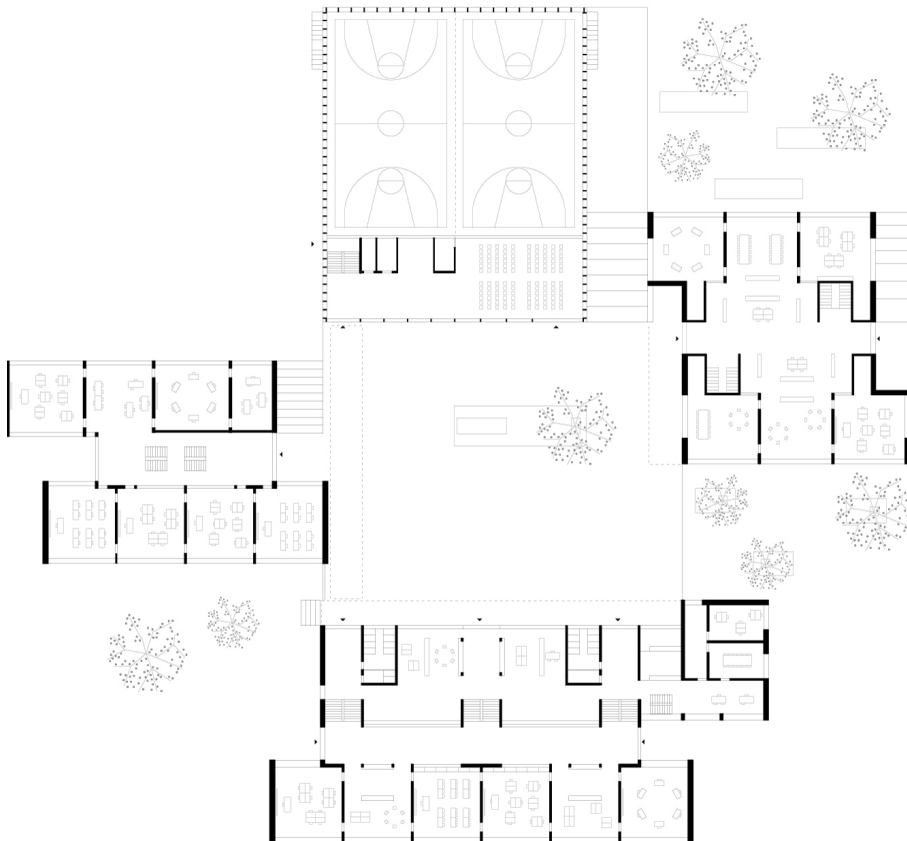


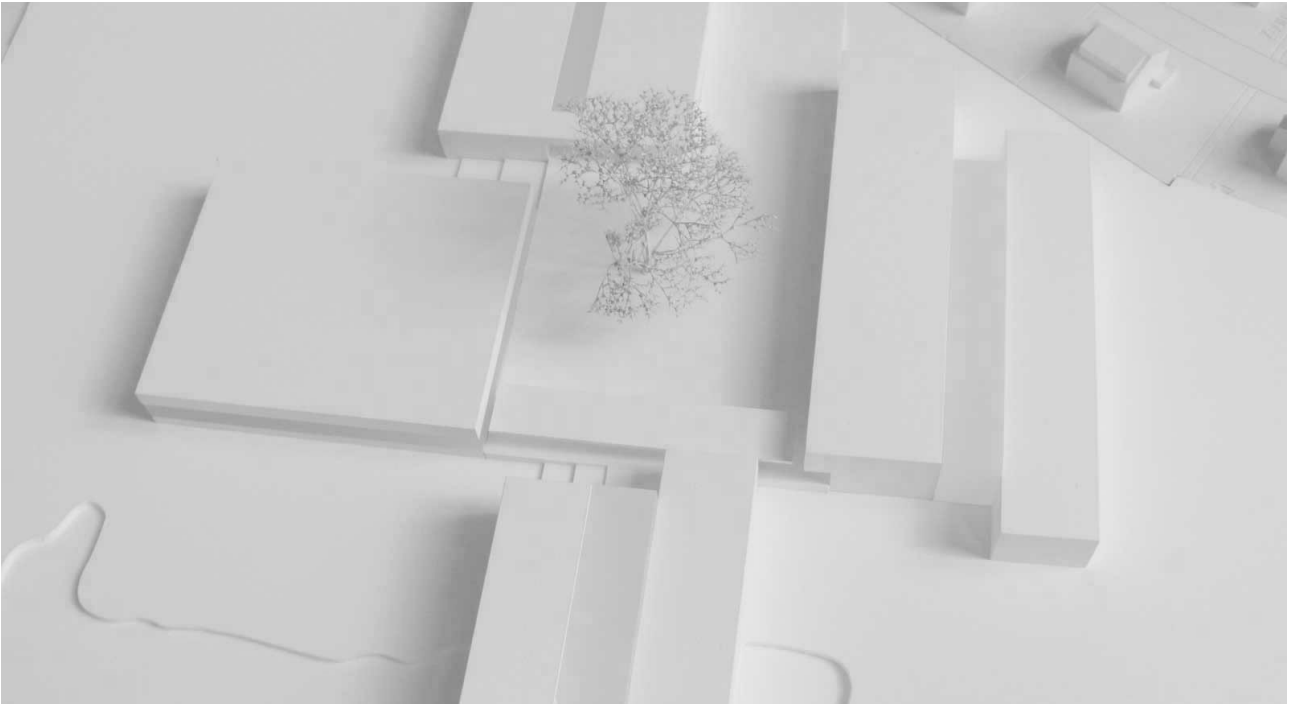
Schenker





“The main element is the schoolyard, a meeting place and circulation zone where all spatial layers interlock.”





PROJECT DETAILS

- Commission Type:
EU-wide open competition
- Award:
2nd Prize
- Client:
Municipality of Embrach
- Location:
Ebnet, CH
- Competition:
2012
- GFA:
5.900 m²
- Building Costs:
16 M EUR
- Energy Efficiency:
Passive House Standard
- Team:
Javier Cuenca Solana, Michael Salvi, Andres Schenker, Thomas Weber, Merle Woköck

COOPERATION

- Statics:
Rolf Soller
- Construction Management and Costs:
Heinz Giger
- Building Services Engineering:
Amstein + Walther
- Landscape Architect:
Riggenbach
- Visualization
Miss 3